



#### RATES INFORMATION

Location of Rating Unit 2/ 168 Coronation Road Hillcrest Auckland 0627

For period 1 July 2017 to 30 June 2018

Assessment Number 1234099183

Valuation Number 32531-00000009700-B

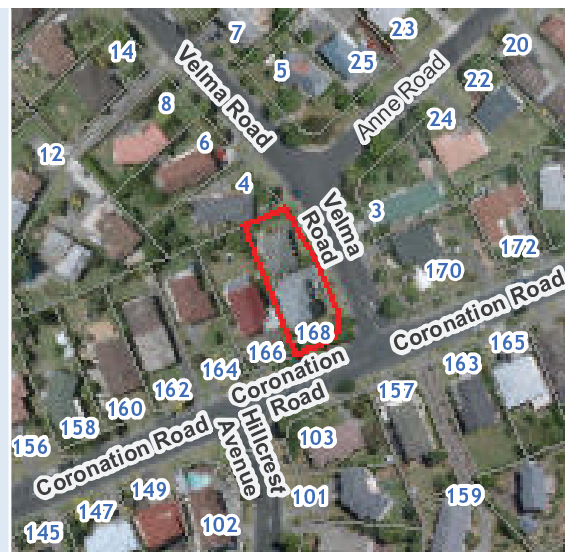
Valuation as at date 1 July 2014

Capital Value \$660,000

Land Value \$485,000

CT Number NA86A/317

Description of Rating Unit 1/2 SH Lot 13 DP 52322, Flat 2 DP 145062



Description of Rates	Factor/Unit	Factor Value	Rate/Charge	Total(GST incl.)
<b>Uniform Annual General Charges</b>				
Uniform Annual General Charge	Number of separate parts	1	404	\$404.00
<b>General Rates</b>				
General Rate - Urban Residential	Capital Value	\$660,000	0.00259753	\$1,714.37
<b>Waste Management</b>				
Waste Management - Base Service	Number of separate parts	1	101.63	\$101.63
<b>Transport Levy</b>				
Interim Transport Levy Targeted Rate - Non Business	Number of separate parts	1	113.85	\$113.85
<b>Other Targeted Rates</b>				
<b>Total Rates for 2017/2018 (GST inclusive)</b>				<b>\$2,333.85</b>